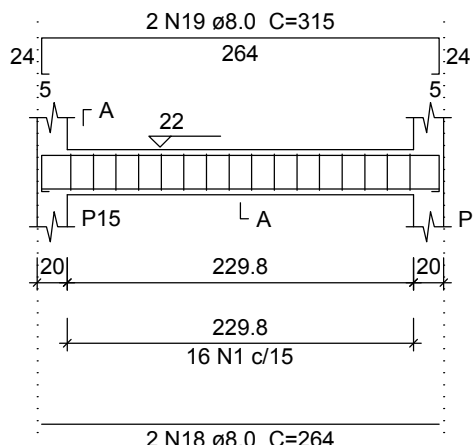


Vigas			
Nome	Seção (cm)	Elevação (cm)	Nível (cm)
V1	20x30	0	120
V3	20x30	0	120
V4	20x30	0	120
V4	20x30	0	120
V5	20x30	0	120
V6	20x30	0	120
V13	20x20	0	120
V14	20x20	0	120
V15	20x20	0	120

Pilares			
Nome	Seção (cm)	Elevação (cm)	Nível (cm)
P1	20 x 20	0	120
P2	20 x 20	0	120
P3	20 x 20	0	120
P4	20 x 20	0	120
P5	20 x 20	0	120
P6	20 x 20	0	120
P7	20 x 20	0	120
P8	20 x 20	0	120
P9	20 x 20	0	120
P10	50 x 20	0	120
P11	50 x 20	0	120
P12	20 x 20	0	120
P13	20 x 20	0	120
P14	20 x 20	0	120
P15	20 x 20	0	120
P16	20 x 20	0	120
P17	20 x 20	0	120
P18	20 x 20	0	120
P19	20 x 20	0	120
P20	20 x 20	0	120
P21	20 x 20	0	120
P22	20 x 20	0	120
P23	20 x 20	0	120
P24	20 x 20	0	120
P25	20 x 20	0	120
P26	20 x 20	0	120
P27	20 x 20	0	120
P28	20 x 20	0	120

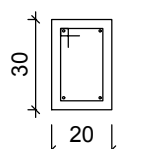
V10 (20 x 30)

ESC 1:50



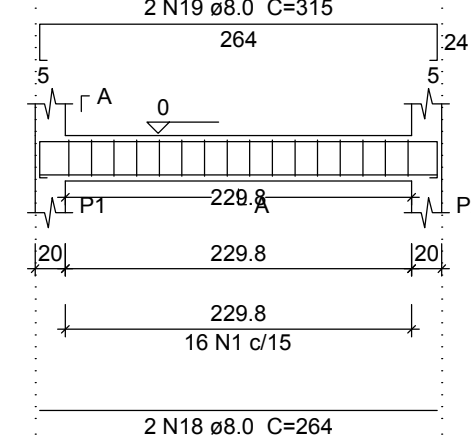
SEÇÃO A-A

ESC 1:25



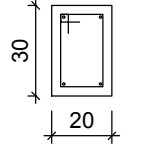
V11 (20 x 30)

ESC 1:50



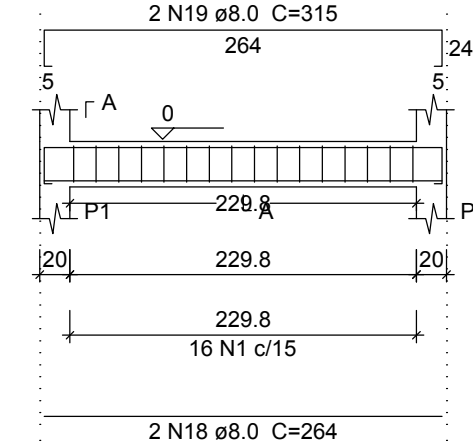
SEÇÃO A-A

ESC 1:25



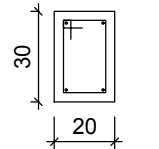
V12 (20 x 30)

ESC 1:50



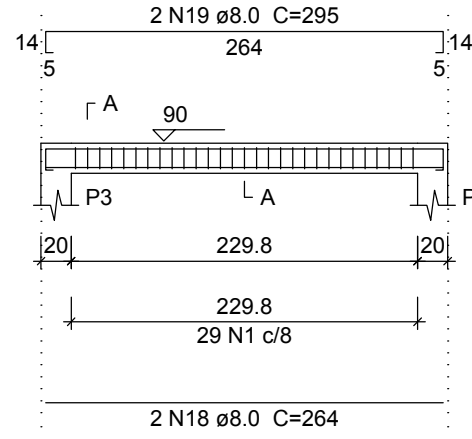
SEÇÃO A-A

ESC 1:25



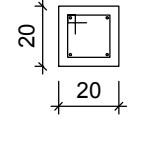
V14 (20 x 20)

ESC 1:50



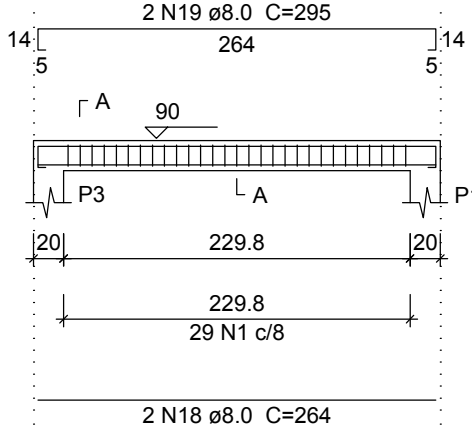
SEÇÃO A-A

ESC 1:25



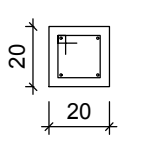
V13 (20 x 20)

ESC 1:50



SEÇÃO A-A

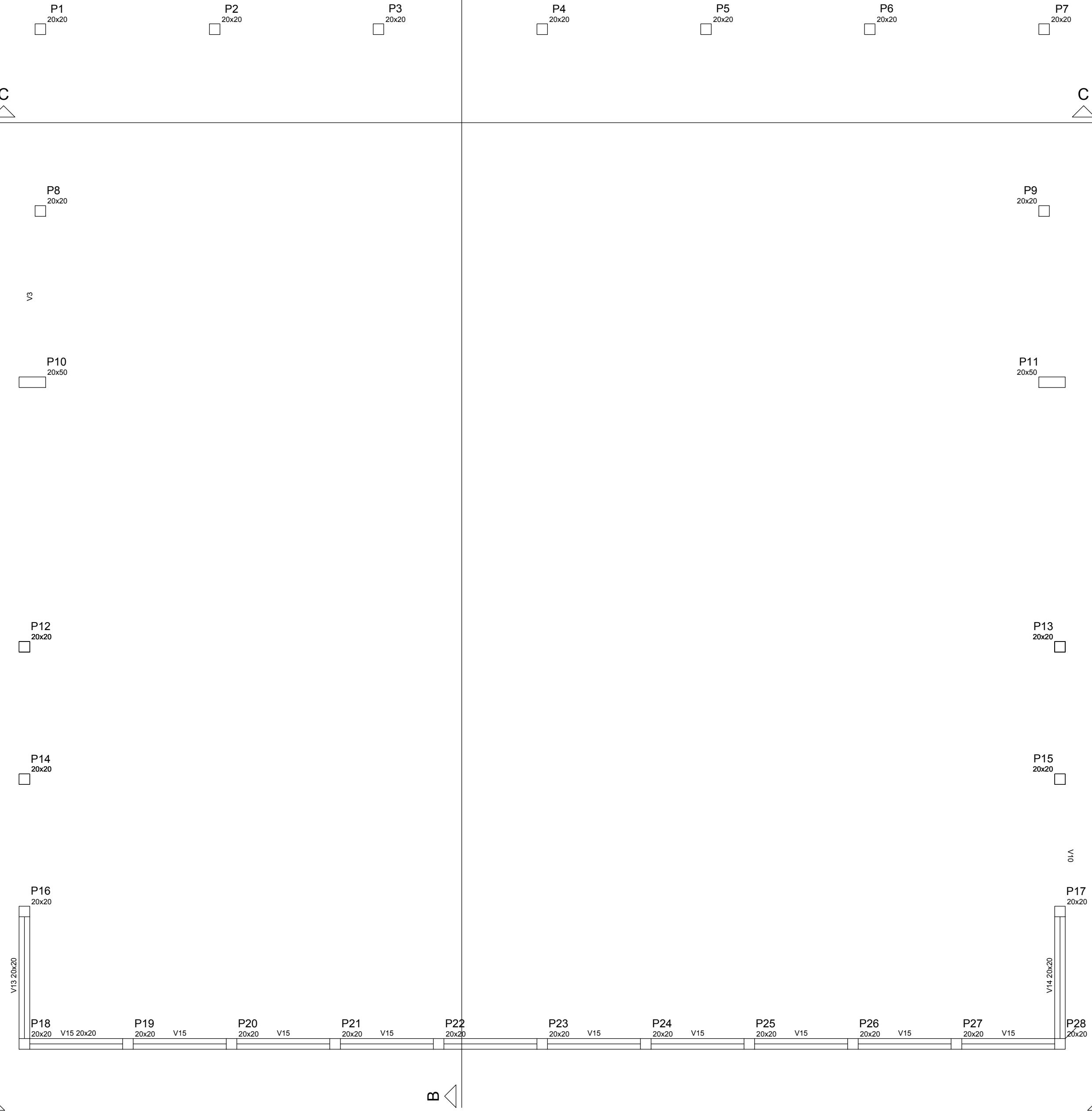
ESC 1:25



Resumo do aço - Vigas

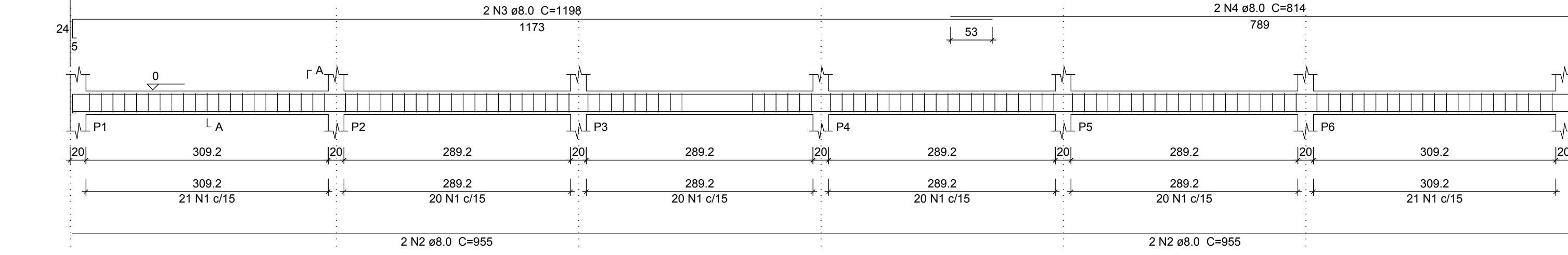
AÇO	DIAM	C.TOTAL (m)	PESO (kg)	PESO + 10 % (kg)
CA50	8.0	446.54	176.4	194.0
CA60	5.0	618.48	95.2	104.7
PESO TOTAL				
CA50		194.0		
CA60		104.7		

Vol. de concreto total (C-25) = 5.86 m³
Área de forma total = 62.56 m²



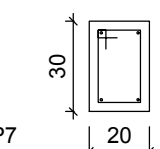
V1 (20 x 30)

ESC 1:50



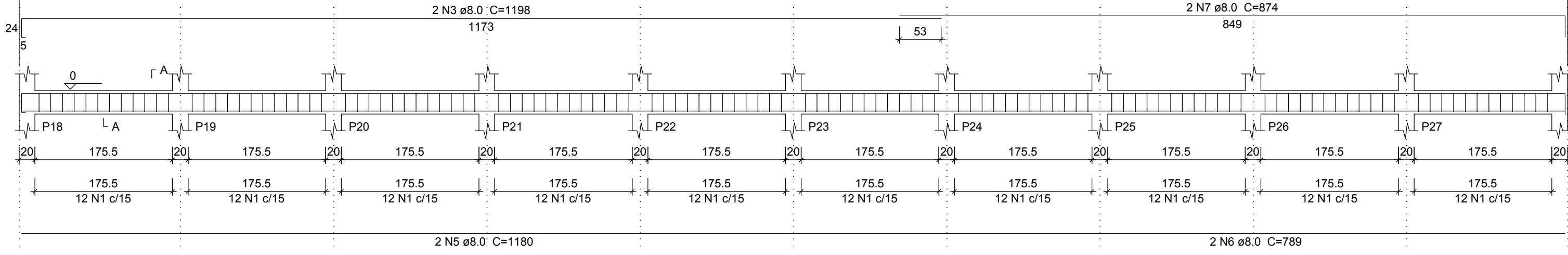
SEÇÃO A-A

ESC 1:25



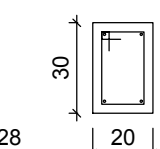
V2 (20 x 30)

ESC 1:50



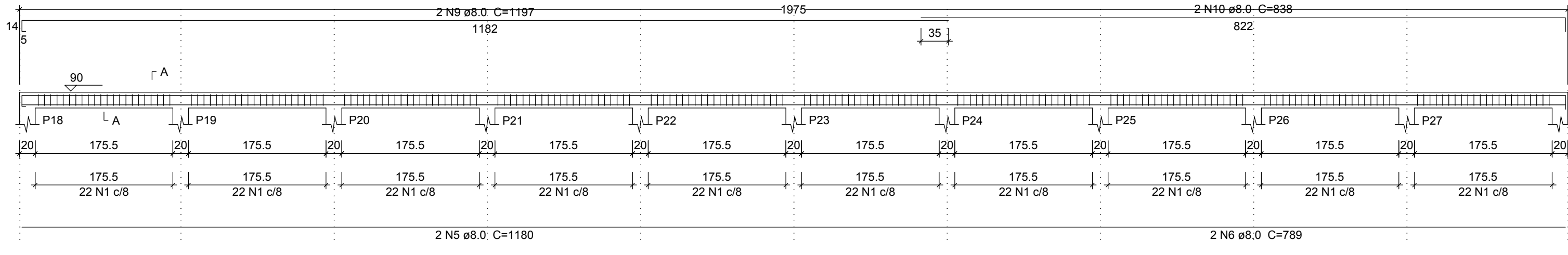
SEÇÃO A-A

ESC 1:25



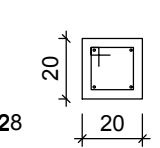
V15 (20 x 20)

ESC 1:50



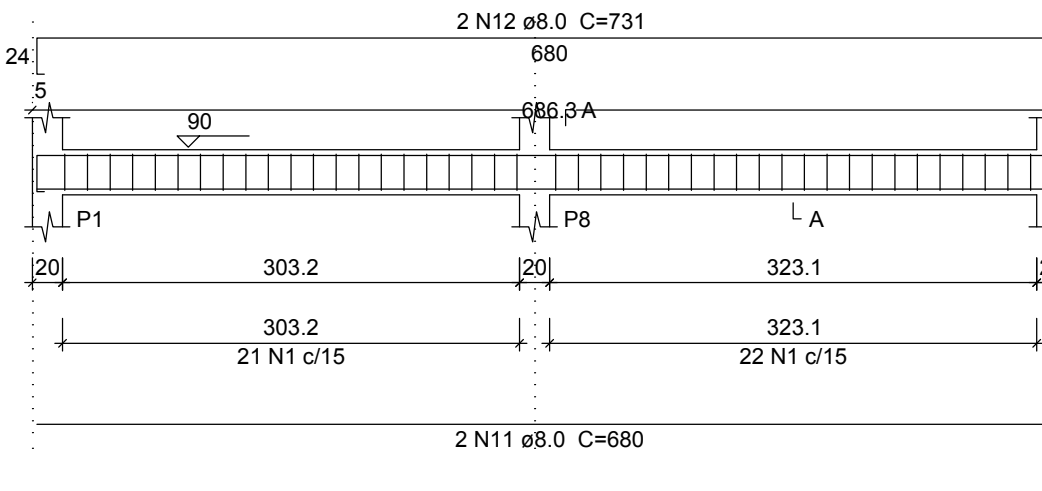
SEÇÃO A-A

ESC 1:25



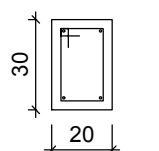
V3 (20 x 30)

ESC 1:50



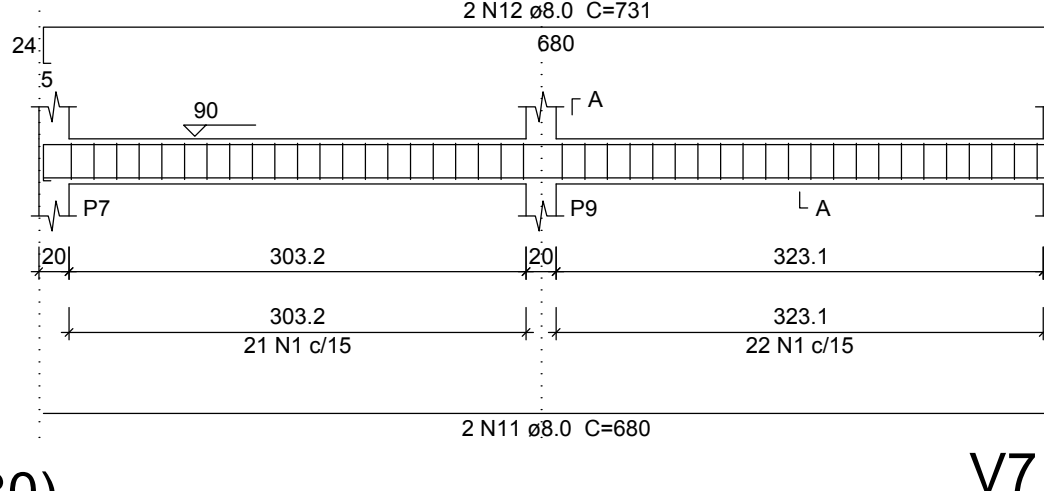
SEÇÃO A-A

ESC 1:25



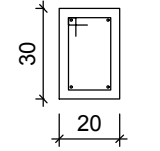
V4 (20 x 30)

ESC 1:50



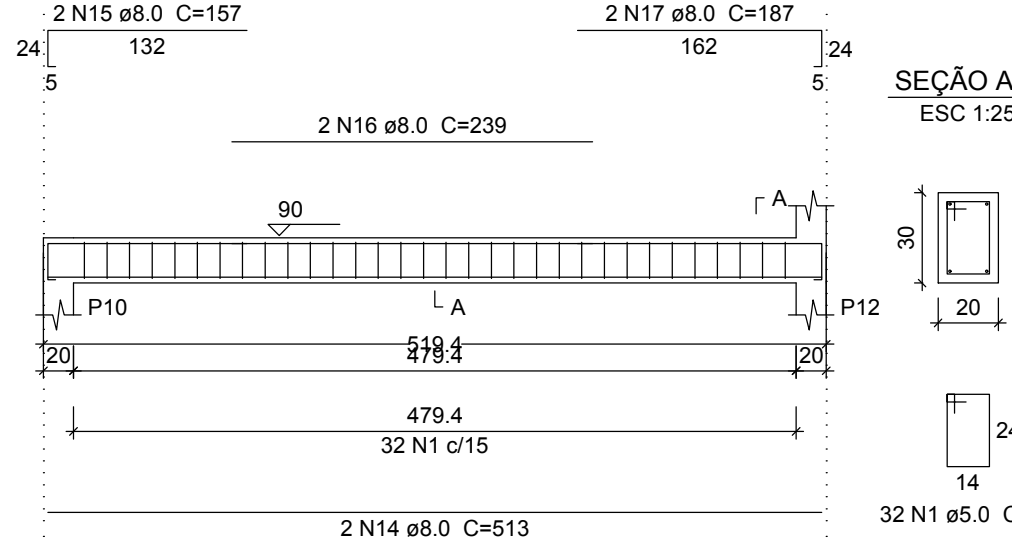
SEÇÃO A-A

ESC 1:25



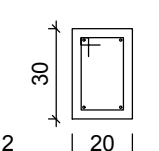
V5 (20 x 30)

ESC 1:50



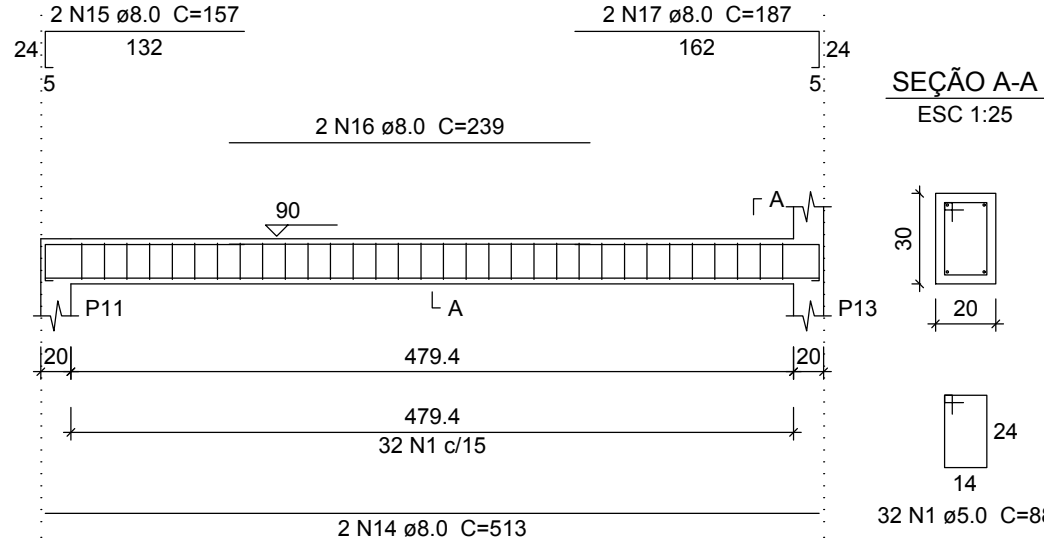
SEÇÃO A-A

ESC 1:25



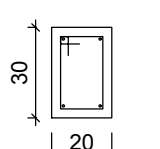
V6 (20 x 30)

ESC 1:50



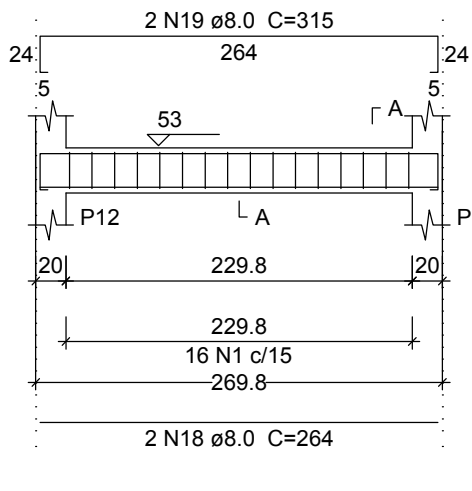
SEÇÃO A-A

ESC 1:25



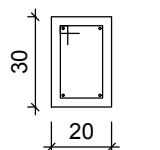
V7 (20 x 30)

ESC 1:50



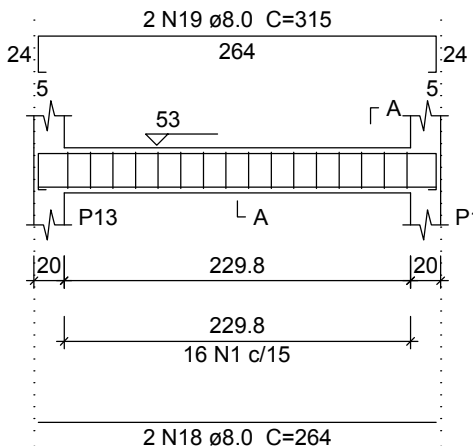
SEÇÃO A-A

ESC 1:25



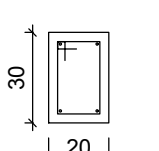
V8 (20 x 30)

ESC 1:50



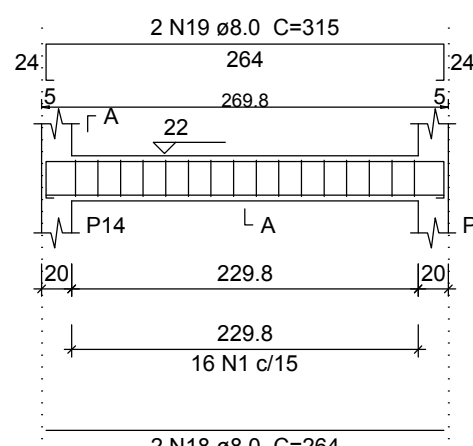
SEÇÃO A-A

ESC 1:25



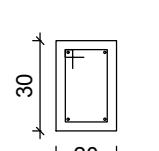
V9 (20 x 30)

ESC 1:50



SEÇÃO A-A

ESC 1:25



Relação do aço - Vigas

AÇO	N	DIAM	Q	UNIT (cm)	C.TOTAL (cm)
CA60	1	5.0	488	88	42944
CA50	8	5.0	278	68	18904
	2	8.0	4	955	3820
	3	8.0	4	1198	4792
	4	8.0	2	814	1628
	5	8.0	4	1180	4720
	6	8.0	4	789	3156
	7	8.0	4	874	3496
	9	8.0	2	1197	2394
	10	8.0	2	838	1676
	11	8.0	4	680	2720
	12	8.0	4	731	2924
	13	8.0	-	-	-
	14	8.0	4	513	2052
	15	8.0	4	157	628
	16	8.0	4	239	956
	17	8.0	4	187	748
	18	8.0	16	264	4224
	19	8.0	16	295	4720

Forma Viga de Amarração

TERRENO	Nº DO LOTE:	Nº DA QUADRA:	BAIRRO:	ÁREA DO LOTE:
	NOME(S) LOGRADOURO(S):	LOCALIDADE:	AGUADA	3087,88m²
PROJETO	PREFEITURA MUNICIPAL DE PAPAGAIOS			18.313.866/0001-18
	GUSTAVO PEREIRA VIANA			248.503/D
PROJETO	TÍTULO: PROJETO ESTRUTURAL DOS MUROS DE ARRIMOS DO TERRENO DA ESCOLA MUNICIPAL NOSSA SRA. APARECIDA	DATA:	USO:	PÚBLICO
	CONTEUDO DA PRANCHA: PLANTAS DE FORMA	ESCALAS:	FOLHA:	03/03